



Whilst every effort is made to give a fair description, the accuracy of these particulars is not guaranteed, neither do they constitute an offer or contract.

MATHESONS ESTATE AGENTS have not tested any apparatus, equipment, fitting or services and so cannot verify that they are in working order. The buyer is advised to obtain verification from their solicitor or surveyor. Measurements are correct to within +/- 6 A sonic tape is used. None of the statements contained in these particulars or any of our properties are to be relied upon as a representation of fact.

Craven Park, London, NW10 9AZ Asking Price £280,000 Leasehold



KEY FEATURES:

- ONE DOUBLE BEDROOM
- THIRD FLOOR APARTMENT
- FITTED KITCHEN WITH INTEGRATED APPLIANCES
- PRIVATE BALCONY
- INTERCOM SYSTEM & LIFT

CHURCHILLMATHESONS are favored to offer this SPACIOUS ONE BEDROOM THIRD FLOOR apartment.

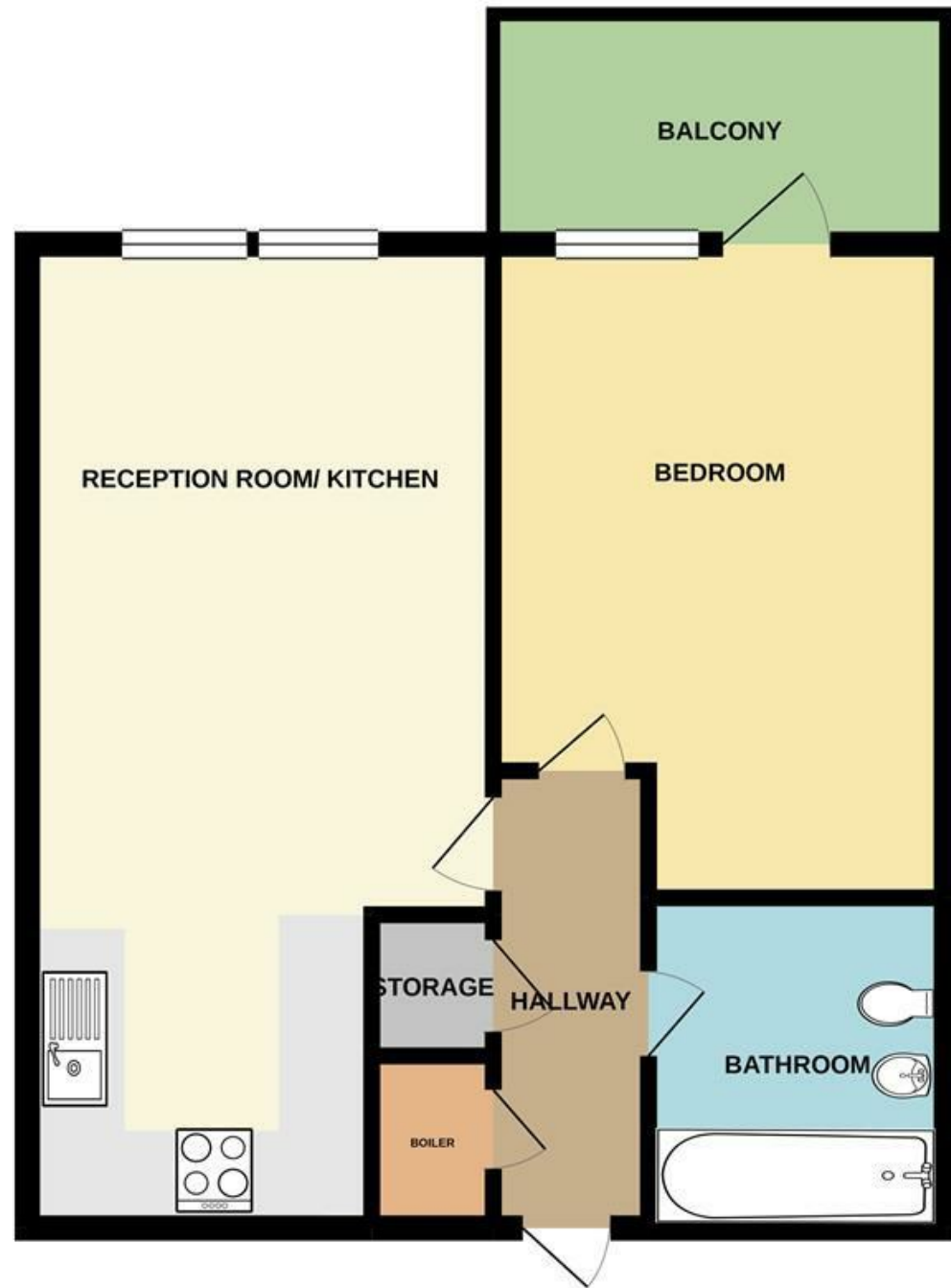
The property comprises of a spacious OPEN PLAN lounge/kitchen/diner with INTEGRATED APPLIANCES, ONE DOUBLE BEDROOM with access to PRIVATE BALCONY and bathroom.

Further benefits are CAR PARKING is available (subject to permit) and SECURE BIKE STORAGE.

Located on a quiet development, close to all local amenities of Harlesden Town Centre and close to local transport links including buses on Craven Park and a 15/20 minute walk to Harlesden Station (London Overground & Bakerloo Line - Zone 3), Neasden Underground Station (Jubilee Line - Zone 3) & Willesden Junction Station (London Overground & Bakerloo Line - Zone 2 & 3)

The total floor area is approximately 48 SQ/M.

THIRD FLOOR



Whilst every attempt has been made to ensure the accuracy of the floorplan contained here, measurements of doors, windows, rooms and any other items are approximate and no responsibility is taken for any error, omission or mis-statement. This plan is for illustrative purposes only and should be used as such by any prospective purchaser. The services, systems and appliances shown have not been tested and no guarantee as to their operability or efficiency can be given.
Made with Metropix ©2021

